

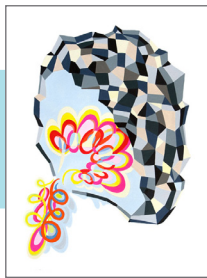


6 SPRING STREET NEW YORK CITY 10012 | A JEN BEKMAN PROJECT | TEL: 212.219.0166 | INFO@20x200.COM

20x200 FRAMING GUIDE

Let's get this art up on your wall! Easier said than done, you say? We're here to help! For a print that's 11"x14" or smaller, a standard off-the-shelf frame from a home furnishings store is your best bet—West Elm, Target or Ikea all offer plenty of options. (You can opt for a custom-built frame, but that will be more expensive.) Find an affordable frame first, then go to your frame shop and have them cut a custom mat. Below are all the measurements + info you'll need to get the job done.

- 1 FRAME SIZE:** We always recommend a standard, easy-to-find size.
- 2 ACTUAL IMAGE SIZE:** The exact dimensions of the image that's printed on the paper. This is for your reference only; be sure to bring the print with you when you're getting your mat cut!
- 3 WINDOW SIZE:** The interior dimension of your custom-cut mat—usually this will match your actual image size, but occasionally we'll specify dimensions that create a small border. We've recommended the dimensions that we feel work best for your specific print.
- 4 MAT SIZE:** The outer dimension of your custom-cut mat. This will match the frame size that we've specified. To be certain that everything fits snugly, bring your frame + print with you when you go to get your mat cut.



Paradigm Shift Jessica Snow

FOR THIS PRINT WE RECOMMEND:

A white wooden frame with a white mat under UV glass.

11" X 8.5" PRINT

1 FRAME SIZE	17" x 14"
2 ACTUAL IMAGE SIZE	10" x 7.47"
3 WINDOW SIZE	10" x 7.47"
4 MAT SIZE	17" x 14"

ABOUT YOUR PRINT

You've received an archival pigment print on 100% cotton rag paper with a matte finish. Pieces framed under UV (glazed) glass should expect no considerable fading for 175 years. Dark storage should keep the pieces as long as good cotton paper can last. The surface of the print is delicate – please handle it carefully to protect it from abrasion!